

River's Edge

by

REYNEN & BARDIS

— HOMES —

3895 Marshall Road, West Sacramento, CA

River's Edge

Welcome to River's Edge, an elegant new community nestled off Marshall Road in West Sacramento. Designed for modern living and comfort, this neighborhood features stunning one-story homes ranging from 3,998 to 4,316 square feet, offering spacious layouts and luxurious finishes. Select homes in River's Edge come with an Accessory Dwelling Unit (ADU), perfect for multi-generational living or guest accommodations.

Situated in a tranquil area of West Sacramento, River's Edge is conveniently close to vibrant urban amenities, top-rated schools, parks, and the charm of Sacramento's riverfront. This exclusive enclave offers residents a perfect blend of privacy, sophistication, and the convenience of single-story living.

Discover a home that fits your lifestyle at River's Edge, where life flows effortlessly.

Learn more at www.rbhomes.com/communities/rivers-edge



Photo from Cabral Ranch

3998

River's Edge

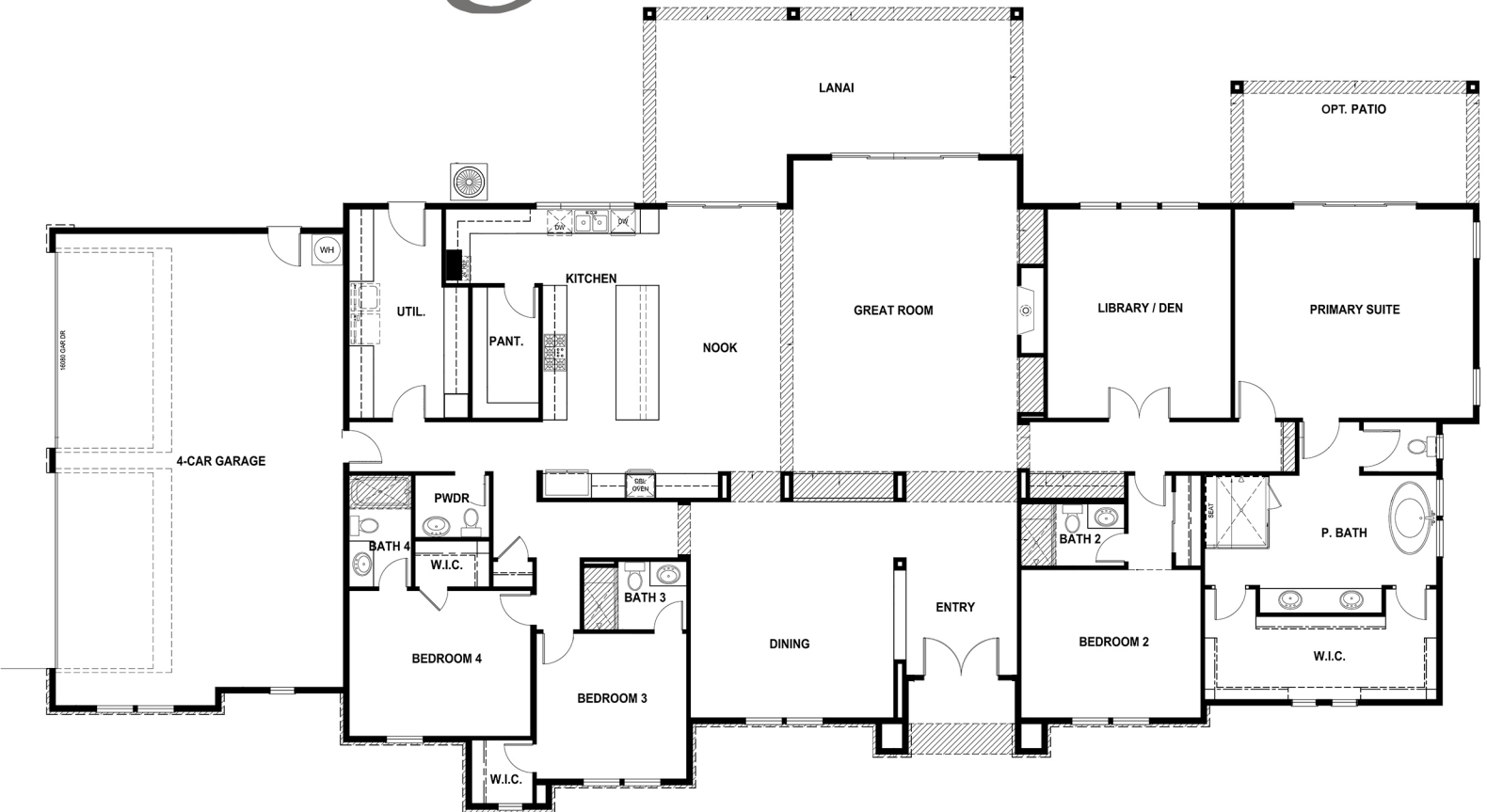


**4 Bedroom | 4 ½ Bath | Den/5th Bedroom |
Formal Dining | Media room |
Great room Concept | 4 Car Garage**



Photo from Cabral Ranch

River's Edge 4007



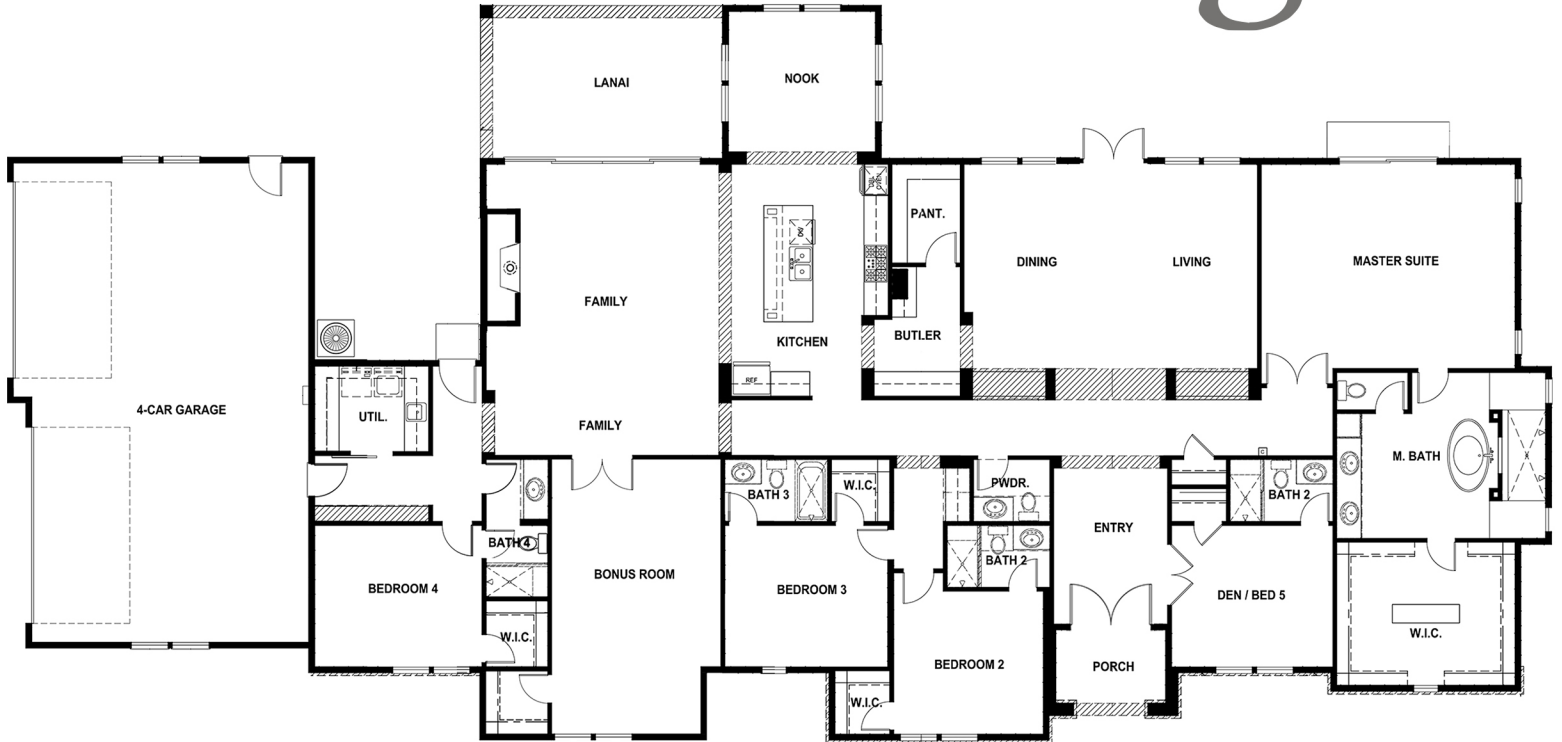
**4 bedroom | 4 ½ bath | Formal dining |
Den/office | Great room concept | 4 car garage**



Photo from Cabral Ranch

4316

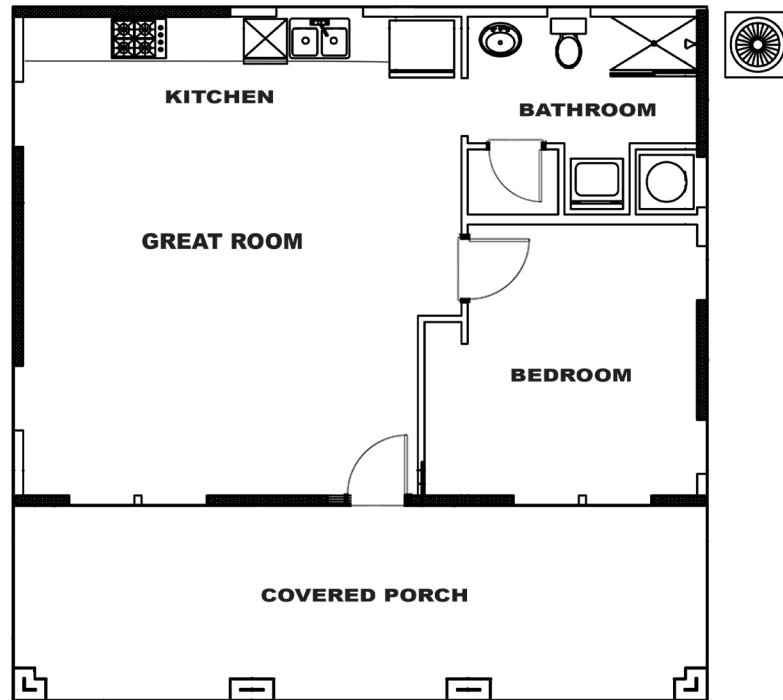
River's Edge



4 bedroom | 5 ½ bath | Den/5th bedroom | Bonus room | Living/dining combo | Family room | 4 car garage



River's Edge ADU



1 Bedroom | 1 Bathroom | Covered Porch
Elevation and color scheme will match the selected house.



Photo from Cabral Ranch

Inspired Design. Elevated Living.

Where architectural elegance meets modern functionality.

Every detail thoughtfully curated for comfort, beauty, and efficiency.

Architecturally Enhanced Exteriors

- Distinct elevations with professionally curated designer color palettes
- Elegant tile roofing
- Fully landscaped front yards with weather-sensing irrigation systems
- Designer coach lighting
- Illuminated address markers
- Solar system (per plan)

Designer Kitchen

- Painted Shaker-style cabinetry
- Soft-close hinges
- Expansive center island (per plan)
- Stainless steel GE® electric appliance package with double ovens
- Large stainless steel sink with pull-out faucet
- Solid surface Silestone® countertops
- Full-height backsplash
- Pendant lighting (per plan)
- Durable, stylish laminate flooring

Refined Interior Features

- 10' ceilings or higher (per plan)
- 8' interior doors with 3" casing
- 5½" baseboards throughout
- Imperfect smooth wall texture
- Laminate flooring in entry, kitchen, nook, great room & most hallways
- Ceiling fans in family room, primary suite & all secondary bedrooms
- LED lighting package
- Black designer door hardware
- Fireplace in family/great room (per plan)
- Fire sprinklers (per plan)
- Electric hybrid 80-gallon water heater

Luxurious Primary Suite Bath

- Dual vanities with Silestone® countertops
- Walk-in shower with 12"x24" designer Owall tile
- 12 "x24" designer tile flooring
- Black plumbing fixtures
- Freestanding soaking tub
- Spacious walk-in closet

Stylish & Efficient Secondary Baths

- 12"x24" tile flooring
- 4"x16" designer tile tub/shower surrounds (per plan)
- Black plumbing fixtures

Well-Appointed Laundry Room

- Laundry cabinetry (per plan)
- Laundry sink
- 12 "x24" designer tile flooring

Smart Home Technology

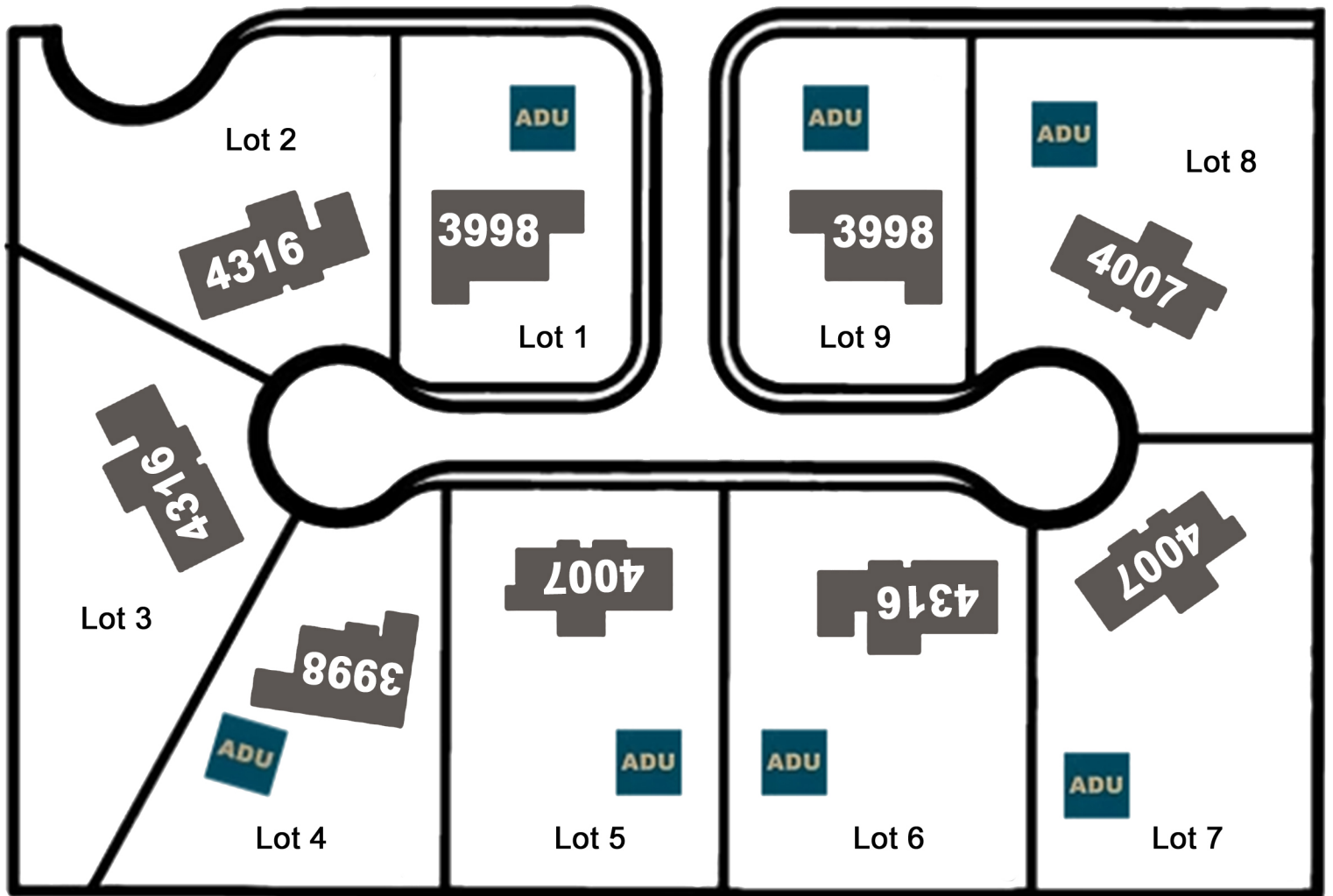
- Keyless entry system
- Video doorbell
- Basic wireless security package
- Central vacuum spot-clean system (per plan)
- 7 .1 home theater pre-wire (per plan)
- Flat screen future pipe at family room (per plan)
- Cat-6 & RG-6 wiring to family/great room, primary & secondary bedrooms
- One wireless access point
- Owned Solar

And So Much More ...

Every home at Rivers Edge is built with craftsmanship, intentional design, and the features today's homeowners expect without compromise.



River's Edge



3895 Marshall Road, Sacramento, CA

www.rbhomes.com/communities/rivers-edge

Call or text

Ann Fraire 916.416.3859

DRE #01236464

Sarah Costa 916.606.2833

DRE #02231314