

# RiverView



## Make Home Your Favorite Getaway

140 BEAUTIFULLY DESIGNED HOUSES



THE NEIGHBORHOOD

THE COMMUNITY

THE BUILDERS

FEATURES & AMENITIES

THE HOMES



## Find yourself relaxing in a lavish community built with the intent of being your personal sanctuary.

Beautiful parks, clear lakes, and excellent dining are just some of the many things that make Riverview one of the area's most desirable communities. Experience the thrill of living near all of your favorite places and activities.

### The Neighborhood



11 MILES | 50 MINUTE BIKE RIDE  
**Vineyards and Wineries**



6 MILES | 30 MINUTE BIKE RIDE  
**Davis Ranch Farmer's Market**



0.5 MILES | 2 MINUTE BIKE RIDE  
**Golf Course**



**Recreational Lakes;  
Fishing, kayaking,  
swimming, etc.**



0.5 MILES | 2 MINUTE BIKE RIDE  
**Hiking and Biking Trails**



2.2 MILES | 12 MINUTE BIKE RIDE  
**Equestrian Center**



## The Community

Everything you need is so close. Have you ever imagined evening wine tastings, morning strolls to the river, weekends at the farmers market and summers on the lake? Living in Riverview offers you all of these advantages and more within and around the incredible Rancho Murieta community.



# The Builder

---

## REYNEN & BARDIS

---

H O M E S

---

Reynen & Bardis Homes and its affiliates have been building in the Sacramento area since 2009 and in northern Nevada since 2010. Although Reynen & Bardis Homes is relatively new, it is only the most recent chapter in a story of two families that have been together in the home building and residential real estate development business for nearly half of a century. These decades of experience permeate the entire company with almost all employees having at least 10 years of experience in their respective job classifications and at least seven years working on the same team for the same principals.

The company's principals have led companies that together have built more than 13,000 homes. The principals are directly involved in day-to-day operations, and everyone in the company has immediate access to everyone else. This allows them to better utilize their collective experience to solve every challenge at hand. This translates into superior building practices, more situation-specific innovation in building design and minimization of waste, all of which together allow us to deliver a better home at a great price.

**To learn more, contact us today**

rbhomes.com | 916-437-4337



RB Homes reserves the right to change or modify pricing, floor plans, elevations, specifications, features, product, options, dimensions, and materials without notice or obligation. Square footage varies by elevation. Renderings are an artist's conception.

# Features & Amenities

## ARCHITECTURALLY ENHANCED EXTERIORS

Multiple elevations with designer-selected color palettes

Tile roofing

Front yard landscaping with weather sensing irrigation system

Coach lighting

Illuminated address

Solar available per plan

## KITCHEN

Shaker style cabinetry

Stainless steel appliances

Large stainless steel single bowl sink with pull out faucet

Solid surface kitchen countertops with 6" backsplash

Large island

Laminate flooring

## INTERIOR FEATURES

Laminate flooring in entry and kitchen areas

10' ceilings on first floor with 9' ceilings at second story

8' doors throughout

5" baseboards

Ceiling fan in family room and master bedroom

LED lighting

Light fixtures in all bedrooms

Electric furnace

Dual zone heating and A/C (2 story plans)

Electric hybrid water heater

Fire sprinklers

Black door hardware

## LUXURIOUS MASTER SUITES

Freestanding tub

Walk-in showers with solid surface slab walls and glass enclosure

Dual vanity sinks

12 x 24 floor tile

## SECONDARY BATHS

Solid surface slab countertops

12 x 24 floor tile

## LAUNDRY ROOM

220V outlet for electric dryer

12 x 24 floor tile

Laundry sink

Additional storage space, per plan

## TECHNOLOGY

Future 220 volt electric car charging outlet, pre plumb

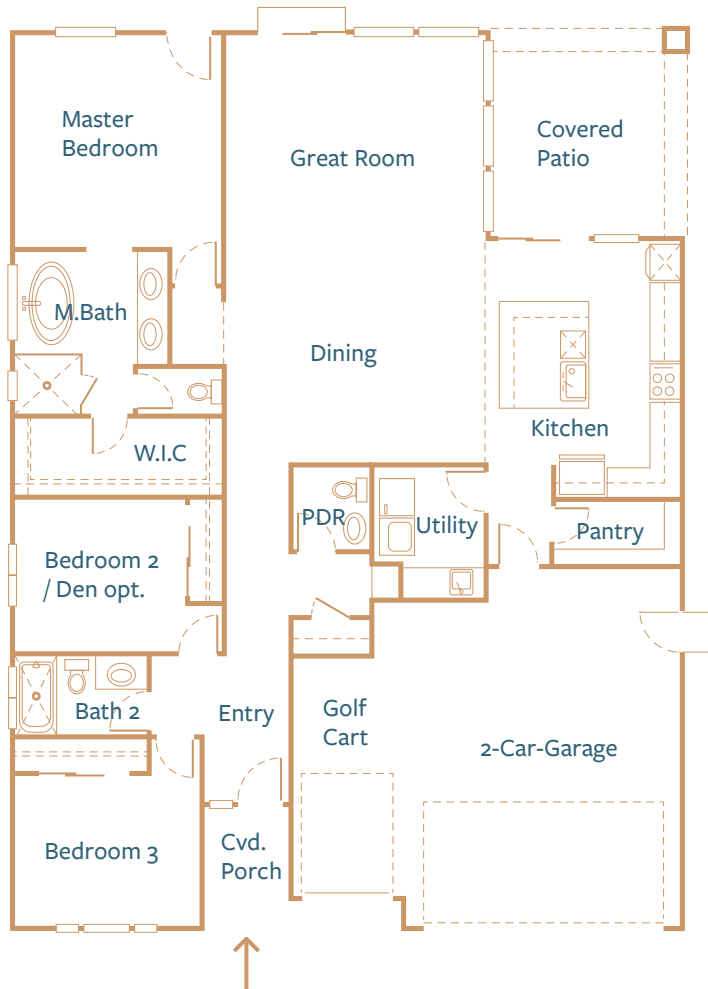
Video doorbell

Keyless entry





# The Traveler



1,895 SQUARE FEET

Single Story, 3 bedroom

2 1/2 bath

2 car plus golf cart garage

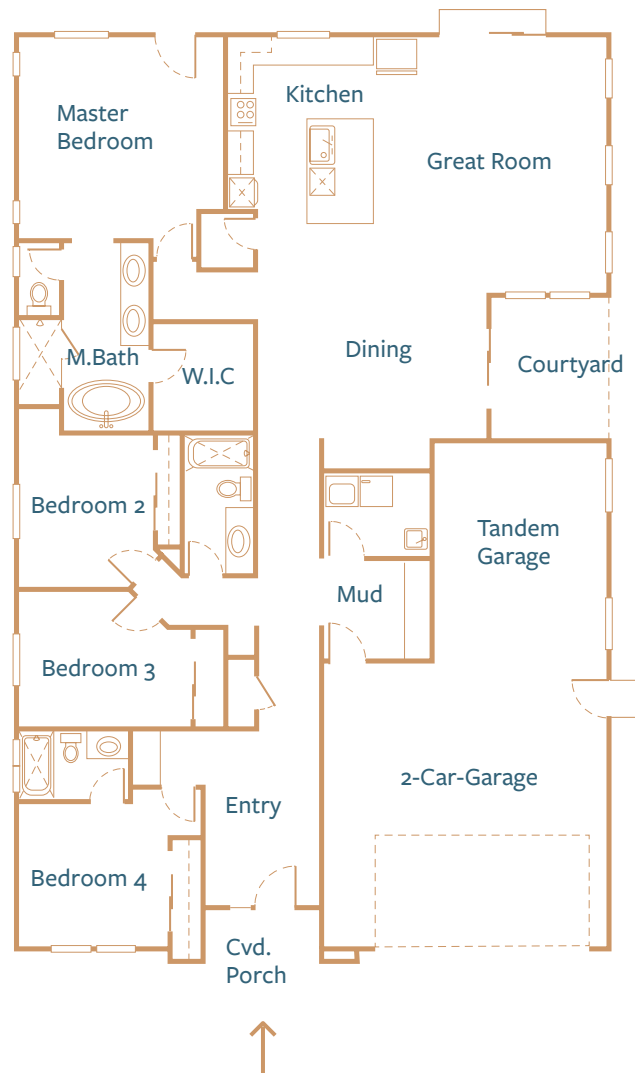
## FEATURES:

Gourmet kitchen

Great room concept

Covered patio off kitchen

# The Globetrotter



## 2,301 SQUARE FEET

Single Story, 3 bedroom

2 ½ bath

2 car plus golf cart garage

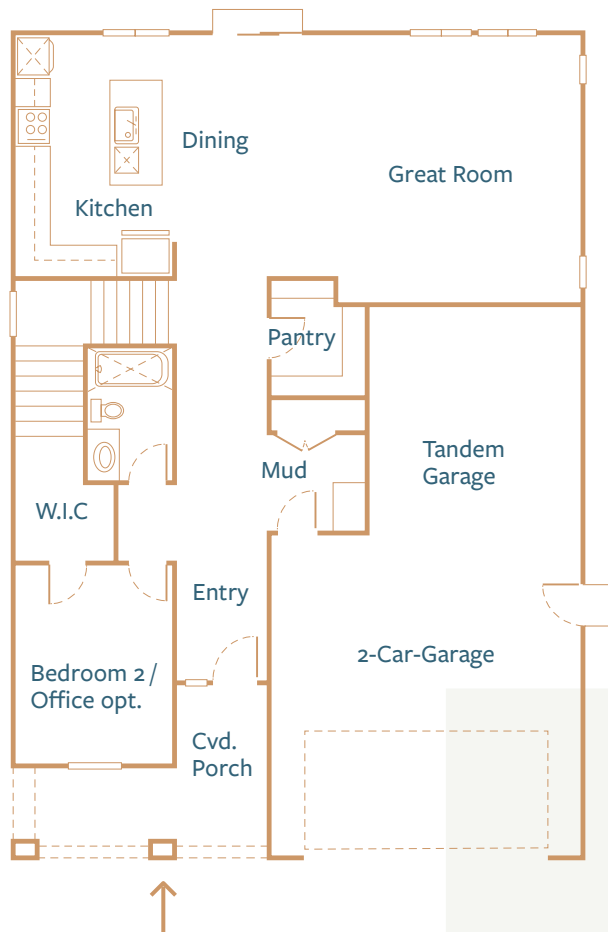
## FEATURES:

Open concept

Side yard

Covered courtyard

# The Voyager



**2,580 SQUARE FEET**

Two story, 4 bedroom  
Loft / 5th bedroom option  
3 bath  
3 car tandem garage

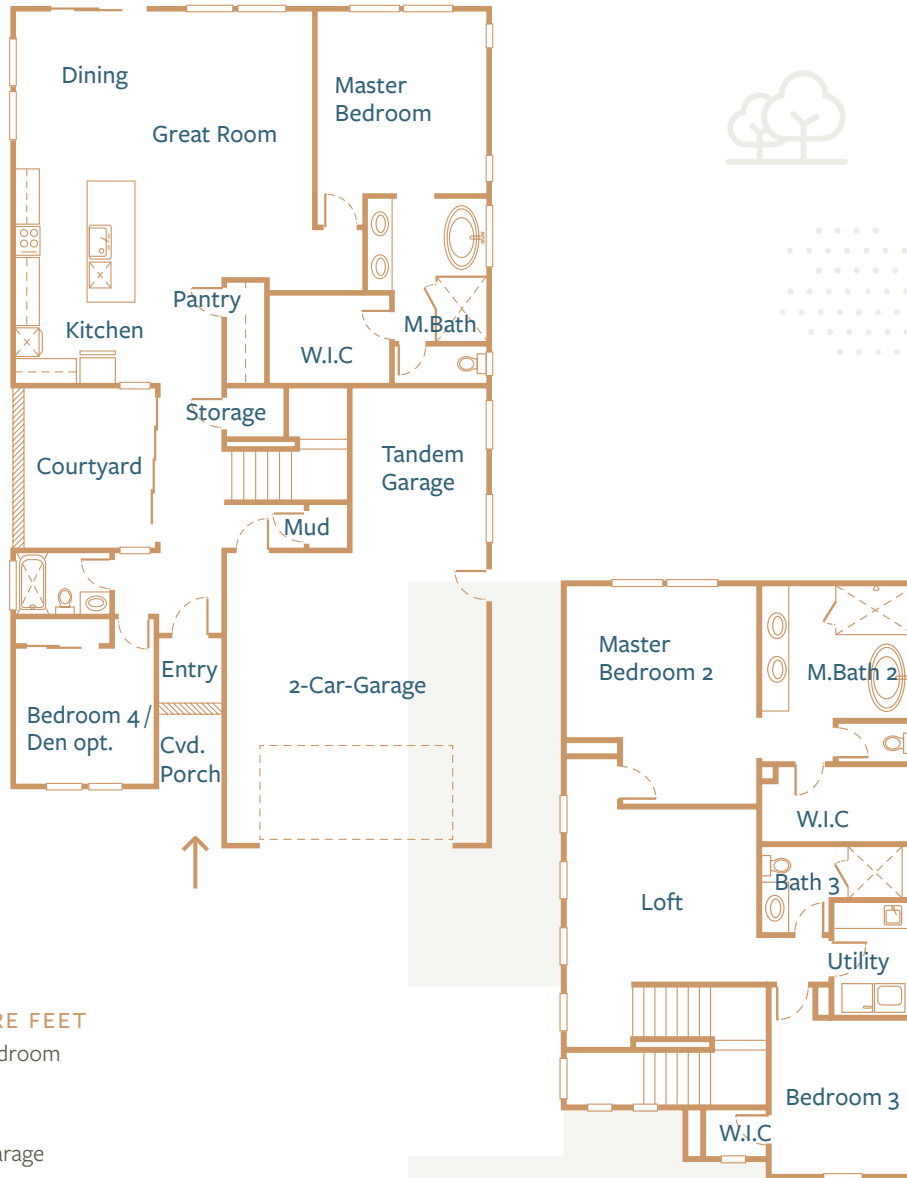
## FEATURES:

Downstairs bedroom  
with full bath  
Great room with dining area  
Covered front porch





# The Trailblazer



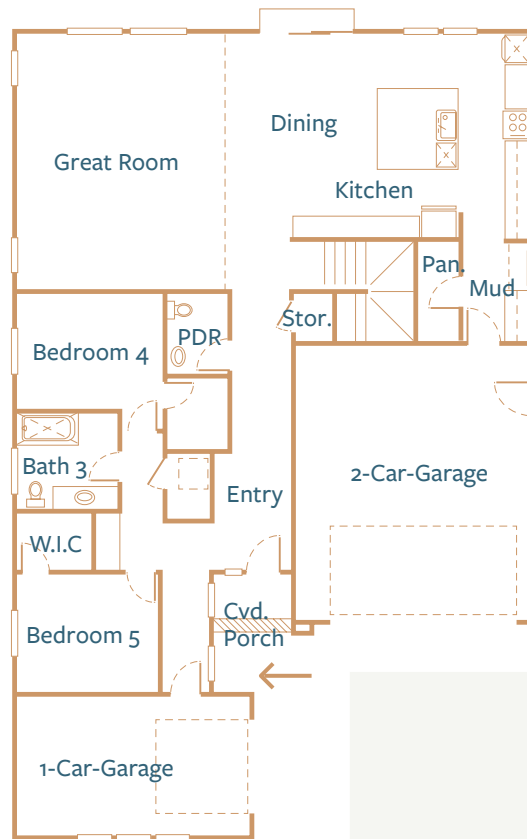
## 3,041 SQUARE FEET

Two story, 4 bedroom  
4 bath  
Loft  
3 car tandem garage

## FEATURES:

Dual master suites with one upstairs  
and one downstairs  
Great room with dining area  
Side yard courtyard

# The Expeditionist



**3,289 SQUARE FEET**

Two story, 5 bedroom

3 ½ bath

Loft

3 car garage

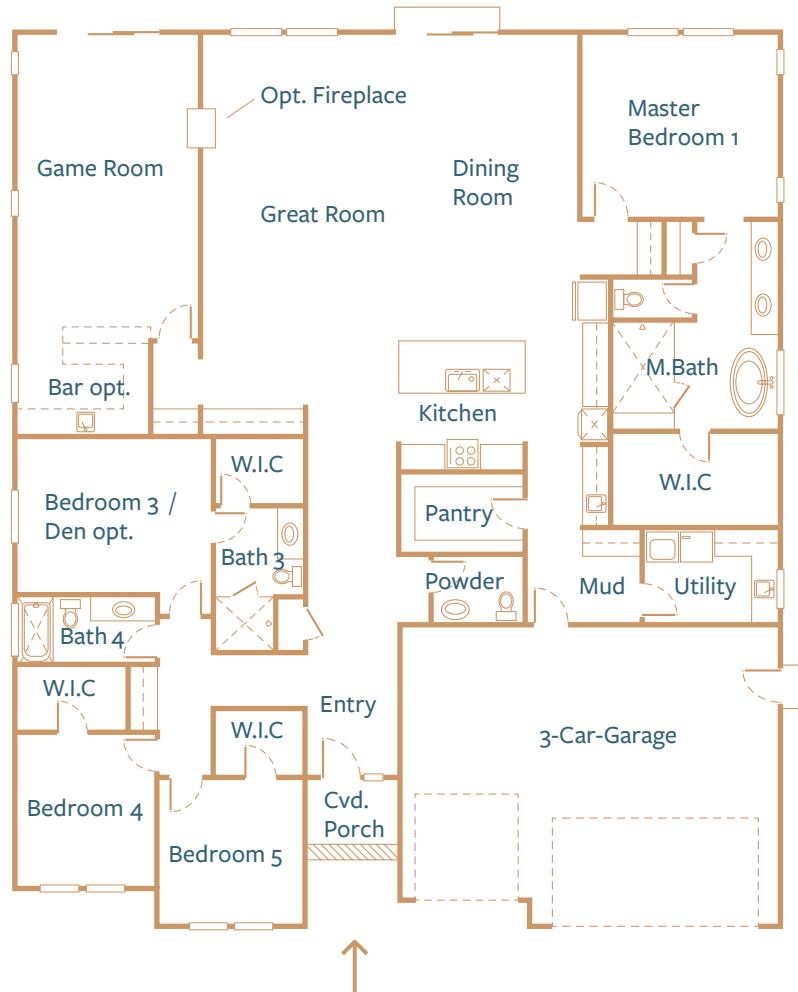
2 bedrooms and full bath downstairs

## FEATURES:

Open concept with dining area



# The Explorer



**3,388 SQUARE FEET**

Single story, 4 bedroom

3 ½ bath

Game room

3 car garage

**FEATURES:**

Great room concept with dining area

